



Hydro Systems, Inc.
 29132 Avenue Paine, Valencia, CA 91355
 Phone (661) 775-0686 · Fax (661) 775-0668
 www.hydrossystem.com
 e-mail: hydro@hydrossystem.com

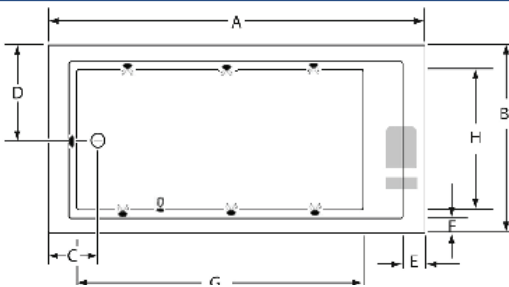
Lacey

Tub specific options

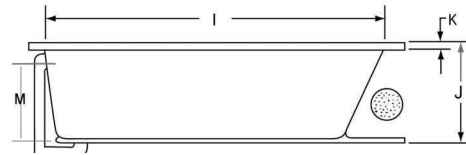


Tub must be set in Mortar Base

- Available as Tub only, Thermal Air, Whirlpool or Combo
- Microban antibacterial protection
- Extra high density fiberglass
- Armrests available
- Flange— molded
- Skirt
- Custom jet & pump locations
- Plated metallic finish
- Additional directional jets
- Swirling, rotating, or jumbo jets
- Micro therapy jet
- Integral waste & overflow
- 1½ HP variable speed pump (digital temperature display optional)
- Electronic low water protection
- Inline heater
- Chromatherapy LED lighting
- Chromatherapy LED Mini spotlights
- Moodlight
- Grab bars
- Back masseuse
- Neck masseuse pillow
- Hydro fragrance
- Hydro fusion
- Hydro coat
- Hydro express

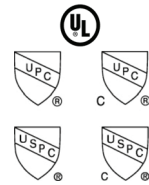


Pump Motor Jets Anti-vortex suction Overflow location



Approvals

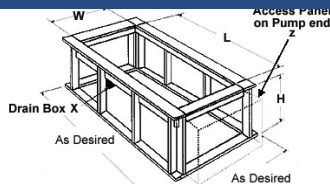
Commonwealth of Massachusetts
 UPC USPC
 US & Canada



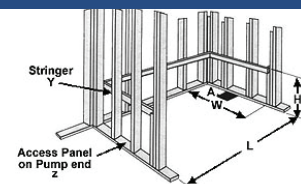
Model	GC	AC	A	B	C	D	E	F	G	H	I	J	K	M	Jets	Pump	Water
6030	N/A	√	59¾"	29¾"	9"	14⅞"	4"	3"	43"	21"	52"	20"	1¾"	17½"	6	2.25	60 gal.
6032	N/A	√	59¾"	32"	9"	16"	4"	3"	43"	23"	52"	20"	1¾"	17½"	6	2.25	63 gal.
6036	N/A	√	59¾"	36"	9"	18"	4"	3"	43"	27"	52"	20"	1¾"	17½"	6	2.25	65 gal.
6630	N/A	√	65¾"	29¾"	9½"	14⅞"	4"	3"	49"	21"	58"	20"	1¾"	17½"	6	2.25	68 gal.
6632	N/A	√	65¾"	32"	9"	16"	4"	3"	49"	23"	58"	20"	1¾"	17½"	6	2.25	70 gal.
6636	N/A	√	65½"	35½"	9"	17⅞"	4"	3"	49"	27"	58"	20"	1¾"	17½"	6	2.25	75 gal.
7232	N/A	√	71½"	31¾"	9"	15⅞"	4"	3"	52"	23"	63½"	20"	1¾"	17½"	6	2.25	80 gal.
7236	N/A	√	71½"	35¾"	9"	17⅞"	4"	3"	55"	27"	64"	20"	1¾"	17½"	6	2.25	95 gal.
7240	N/A	√	71½"	39¾"	9"	19⅞"	4"	3"	55"	31"	64"	20"	1¾"	17½"	6	2.25	107 gal.

Amps	Volts	Breaker	Dedicated Service
13.5	120	20 amp	GFCI Protected

Framing Dimension



Disclaimer: Certain options or altering the pump/blower location may cause the pump/blower to extend beyond the tub decking.
 For cutout dimensions wait for unit to arrive.
 All specifications subject to change without notice.



Model	Island Drop-In			3 Wall Installation		
	(L)ength	(W)idth	(H)eight Finish	(L)ength	(W)idth	(H)eight Ledger
6030	58"	28"	19¼"	59¾"	29¾"	20¾"
6032	58"	30"	19¼"	59¾"	32"	20¾"
6036	58"	34"	19¼"	59¾"	36"	20¾"
6630	64"	28"	19¼"	65¾"	29¾"	20¾"
6632	64"	30"	19¼"	65¾"	32"	20¾"
6636	64"	34"	19¼"	65½"	35½"	20¾"
7232	70"	30"	19¼"	71½"	31¾"	20¾"
7236	70"	34"	19¼"	71½"	35¾"	20¾"
7240	70"	38"	19¼"	71½"	39¾"	20¾"