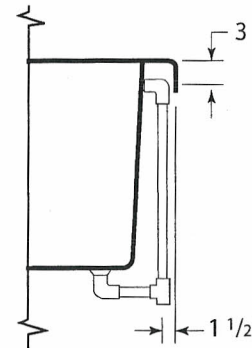
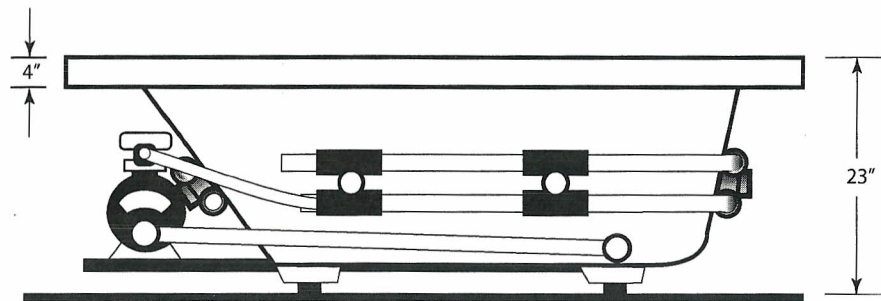
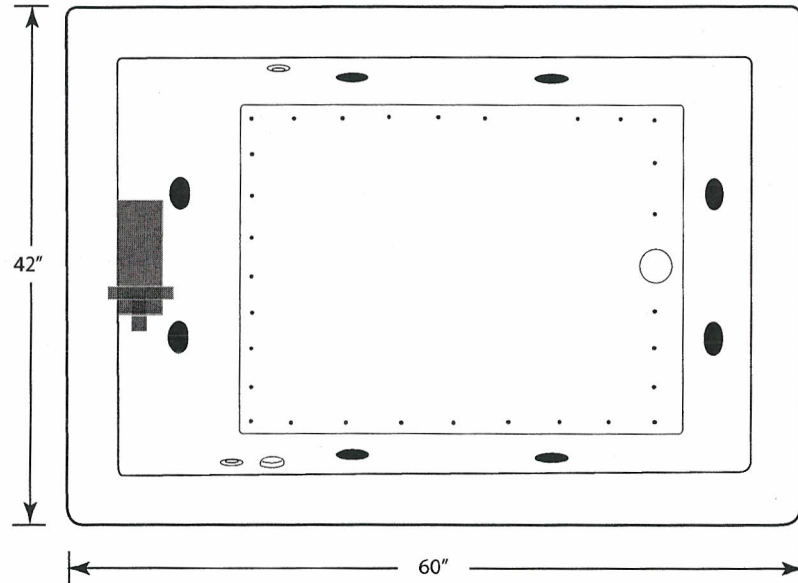


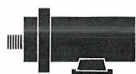
# VENETIAN 4260VNW

## S P E C I F I C A T I O N S

- All dimensions are plus or minus 1/4" (Maximum Tolerance)
- Atlantis Whirlpools reserve the right to make changes without notice.
- Copyright © All Rights Reserved



DRAWING NOT TO SCALE



STANDARD PUMP LOCATION

**MODEL:** 4260VNW

**SIZE:** 42" X 60"

**EST. BOXED WEIGHT:** 110 lbs. (TUB ONLY)

**EST. BOXED WEIGHT:** 170 lbs. (WHIRLPOOL OR AIR)

**EST. BOXED WEIGHT:** 195 lbs. (WHIRLPOOL w/AIR)

**BOXED SIZE:** 45" X 71" X 24"

**AVERAGE FILL (gallons):** 70

**PUMP SIZE:** 1.5 HP

**BLOWER:** 1.0 HP

**ELECTRICAL:** 110V 20 AMP CIRCUIT

**MATERIAL:** Acrylic reinforced fiberglass

**Standard Colors:** White, Bone, Almond,  
Biscuit, Sterling Silver, Linen

**Standard Features:** Air Switch

**Jets:** 8 Star Jets

**Air Controls:** 2

**Suction Fittings:** 1

**Air Injectors:** 30

Interior Depth	Interior Length Top	Interior Width Top	Interior Length Bottom	Interior Width Bottom
20	51 1/4	32 7/8	41 5/8	29 1/4



**ANSI-Z.124.1  
ASME-A.112.19.7**

ATLANTIS

A Division of Spa World Corp.  
5701 NW 35 Avenue Miami, FL 33142  
PH: 866.588.8008 • FAX: 866.577.9225  
www.atlantiswhirlpools.com